

Important Instructions for your Visit

Before your visit:

Please **read** the **Plain Language Statement** concerning the tests which will be conducted at the clinic visit and the **Consent form**.

Please try and **avoid** the following:

- (1) **Smoking** for **4 hours** before appointment time.
- (2) **Long Acting Reliever Medication*** for **12 hours** before your appointment time.
- (3) **Short Acting Reliever Medication*** for **4 hours** before appointment time.

*Refer to the last page for a medication list.

If you regularly use medication, please bring a list of those medications to your visit.

If you are a close contact of someone who has tested positive for COVID-19, or currently have any symptoms, including fever, cough, sneezing, sore throat or runny nose, please reschedule your appointment or call 1800 110 711 to discuss.

If you need to cancel or reschedule your appointment, please call to let us know as soon as possible.

To contact us:

TAHS Phone Line: 1800 110 711

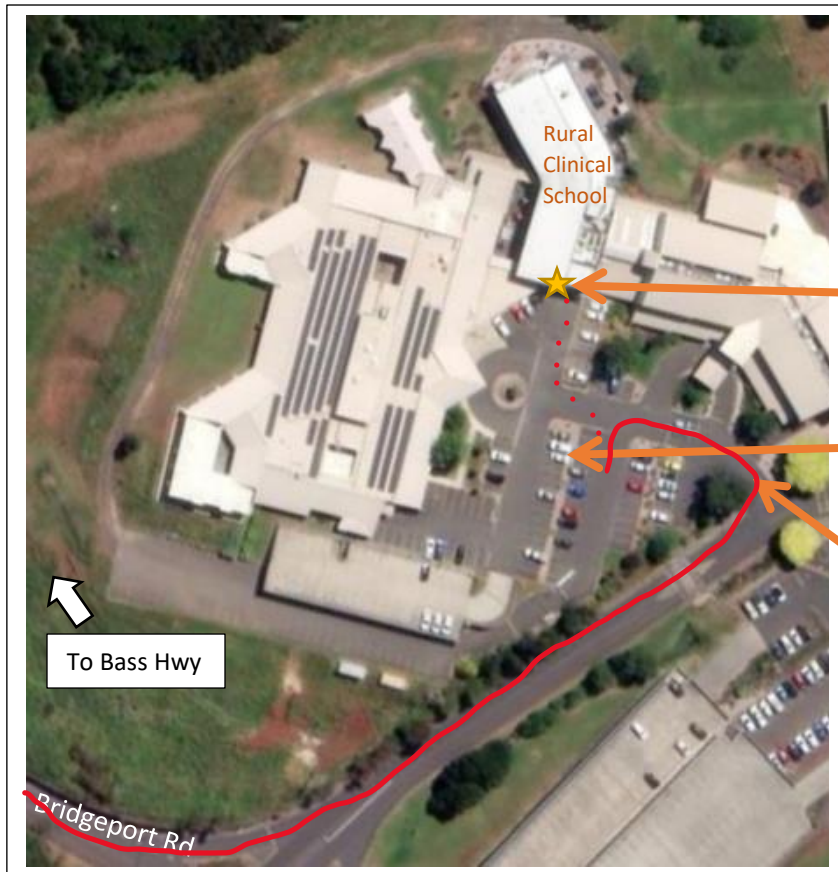
TAHS Email: inq-tas@unimelb.edu.au

If we do not respond to your phone call, please leave a message and we will get back to you as soon as possible

Where to come:

University of Tasmania - Rural Clinical School
21 Brickport Road, Burnie, 7320

Access and parking directions to our Burnie campus




2. Public Parking – Please use outdoor Public Parking not Private Undercroft parking. The TAHS will reimburse \$2 parking costs incurred for you visit.

1. Entrance to the North West Private Hospital – boom gate.

Name of medications (See pages 5 - 7 for picture references)

Short-Acting Beta Antagonist (SABA)	Inhaled Corticosteroids (ICS)	Long-Acting Beta Antagonist (LABA)	Inhaled Corticosteroids / Long-Acting Beta Antagonist combination (ICS/LABA)	Long- Acting Muscarinic medications (LAMA)	LAMA/LABA
<ul style="list-style-type: none"> • Ventolin • Asmol • Bricanyl • Airomir • Zempreon 	<ul style="list-style-type: none"> • Flixotide Inhaler or Accuhaler • QVAR Inhaler or Autohaler • Fluticasone Cipla • Pulmicort • Alvesco • Arnuity 	<ul style="list-style-type: none"> • Oxis • Serevent • Onbrez 	<ul style="list-style-type: none"> • Seretide MDI or Accuhaler • Fluticasone Salmeterol • Flutiform Inhaler • Symbicort Turbuhaler or Rapihaler • DuoResp Spiromax • Breo Ellipta • Fostair Inhaler • Ateectura Breezhaler 	<ul style="list-style-type: none"> • Spiriva Respimat or Handihaler • Braltus Zona • Bretaris Genuair • Seebri Breezhaler • Incruse Ellipta 	<ul style="list-style-type: none"> • Spiolto Respimat • Brimica Genuair • Ultibro Breezhaler • Anoro Ellipta
ICS/LAMA/LABA		Short-Acting Muscarinic medications (SAMA)		Non-Steroidal Preventers	
<ul style="list-style-type: none"> • Trelegy Ellipta • Enerzair Breezhaler • Trimbow Inhaler 		<ul style="list-style-type: none"> • Atrovent Metered Aerosol 		<ul style="list-style-type: none"> • Montelukast Tablet 	

Picture of medications

SABA	ICS	LABA
 <p>Ventolin Inhaler † ^ salbutamol 100mcg</p>  <p>Asmol Inhaler † ^ salbutamol 100mcg</p>  <p>Bricanyl Turbuhaler ^{a c} terbutaline 500mcg</p>  <p>Airomir Autohaler † # salbutamol 100mcg</p>	 <p>Flixotide Inhaler † fluticasone propionate 50mcg* • 125mcg • 250mcg <i>*Flixotide Junior</i></p>  <p>Fluticasone Cipla Inhaler † fluticasone propionate 125mcg • 250mcg</p>  <p>Flixotide Accuhaler † fluticasone propionate 100mcg* • 250mcg • 500mcg</p>  <p>QVAR Inhaler † beclometasone 50mcg • 100mcg</p>	 <p>Oxis Turbuhaler ‡ formoterol 6mcg • 12mcg</p>  <p>Serevent Accuhaler ‡ salmeterol 50mcg</p>  <p>Onbrez Breezhaler # indacaterol 150mcg • 300mcg</p>
 <p>Zempreon Inhaler Salbutamol 100mcg</p>	 <p>Pulmicort Turbuhaler † budesonide 100mcg • 200mcg • 400mcg</p>  <p>QVAR Autohaler ‡ beclometasone 50mcg • 100mcg</p>  <p>Alvesco Inhaler † ciclesonide 80mcg • 160mcg</p>  <p>Arnuity Ellipta † fluticasone furoate 50mcg • 100mcg • 200mcg</p>	

ICS/LABA



Seretide MDI^a
fluticasone propionate/salmeterol
50/25 • 125/25 • 250/25^c



Fluticasone + Salmeterol Cipla Inhaler^a
fluticasone propionate/salmeterol
125/25 • 250/25^c



Seretide Accuhaler^a
fluticasone propionate/salmeterol
100/50 • 250/50 • 500/50^c



Flutiform Inhaler^a
fluticasone propionate/formoterol
50/5 • 125/5 • 250/10



Symbicort Turbuhaler^a
budesonide/formoterol
100/6 • 200/6 • 400/12^c



DuoResp Spiromax^a
budesonide/formoterol
200/6 • 400/12^c



Symbicort Rapihaler^a
budesonide/formoterol
50/3 • 100/3 • 200/6^c



Brevo Ellipta^a
fluticasone furoate/vilanterol
100/25^c • 200/25



Fostair Inhaler^a
beclomethasone/formoterol
100/6



Atecura Breezhaler^a
Indacaterol/mometasone
125/62.5 • 125/127.5 • 125/240

LAMA



Spiriva Respimat #[‡]/^a
tiotropium 2.5mcg



Spiriva Handihaler #
tiotropium 18mcg



Braltus Zonda #
tiotropium 13mcg



Bretaris Genuair #
aclidinium 322mcg



Seebri Breezhaler #
glycopyrronium 50mcg



Incruse Ellipta #
umeclidinium 62.5mcg

LAMA/LABA



Spiolto Respimat^c
tiotropium/olodaterol
2.5/2.5



Brimica Genuair^c
aclidinium/formoterol
340/12



Ultibro Breezhaler^c
indacaterol/glycopyrronium
110/50



Anoro Ellipta^c
umeclidinium/vilanterol
62.5/25

ICS/LAMA/LABA

SAMA

Non-Steroidal Preventers



Trelegy Ellipta^{a c}
fluticasone furoate/
umeclidinium/vilanterol
100/62.5/25mcg

Enerzair Breezhaler^a
Indacaterol/glycopyrronium/
mometasone
114/46/136mcg • 114/46/68mcg

Trimbow Inhaler^c
Beclometasone/Formoterol/
Glycopyrronium
100/6/10mcg



Atrovent Metered Aerosol † ^
ipratropium 21mcg



Montelukast Tablet^a
montelukast
4mg • 5mg • 10mg
Generic medicine suppliers